

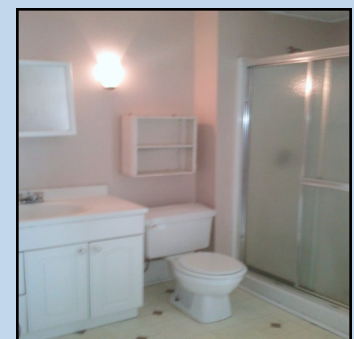
1069 23rd Ave. SE. Minneapolis, MN

\$1,000 + utilities



- 2+ Bedroom
- 1 Bathroom
- Off Street Parking
- Close to U of M
- Washer/Dryer

2+ bedroom, 1 bath upper unit with off street parking. Home features hardwood floors, large eat-in kitchen and remodeled bathroom. Close to U of M campuses. Near bus line and downtown. Tenant pays only gas and electric. 12 month lease, security deposit equivalent to one month's rent.



Parallel

Companies Inc.

PARALLEL TO YOUR NEEDS

Phone: 952-431-1095
Fax: 952-431-1069
E-mail: info@parallelco.com
www.parallelco.com



All information deemed liable and supplied from source other than management company.