

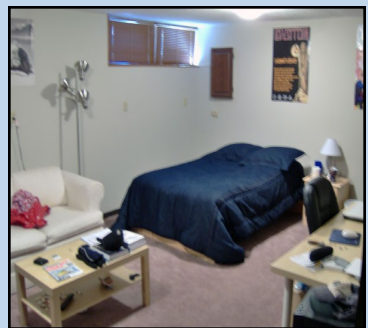
306 9th St. SE. Minneapolis, MN

\$1,250 + utilities



- 3 Bedroom
- 2 Bathroom
- Garage
- Off-Street Parking
- Washer/Dryer

3 BR, 2 BA townhome with single car attached garage. Home features deck and finished lower level for additional living space. Located in a quiet cul-de-sac, close to U of M Minneapolis campus.



Parallel

Companies Inc.

PARALLEL TO YOUR NEEDS

Phone: 952-431-1095
Fax: 952-431-1069
E-mail: info@parallelco.com
www.parallelco.com



All information deemed liable and supplied from source other than management company.